



AC2300 Wireless MU-MIMO Gigabit Router

Best for Simultaneous
4K Streaming and Gaming

Archer C2300



1625Mbps + 600Mbps
Dual Band Wi-Fi

1.8GHz
Dual-Core CPU

MU-MIMO

Smart
Connect

Range
Boost

Highlights

MU-MIMO for 3× Faster Connections

MU-MIMO technology serves up to three devices at once, reducing wait time, increasing Wi-Fi throughput for every device, and making each stream more efficient.

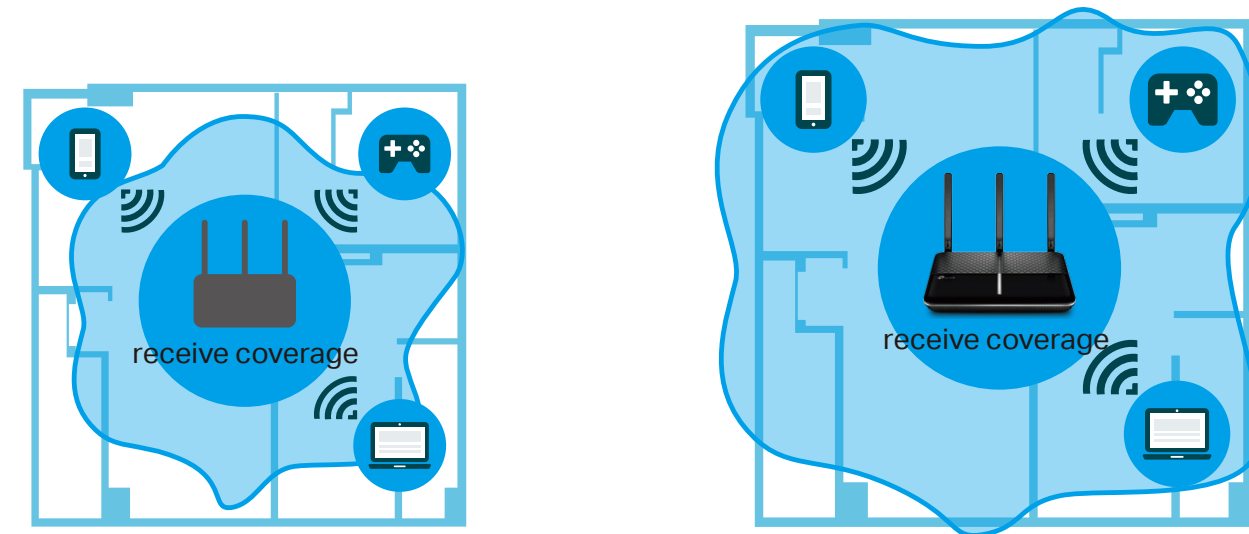


Traditional Router
Sends data to one device at a time

MU-MIMO Router
Simultaneously sends data to multiple devices

Range Boost for Better Whole Coverage

Range Boost greatly improves the routers ability to detect devices that are further away or low-powered, giving your network even greater coverage.



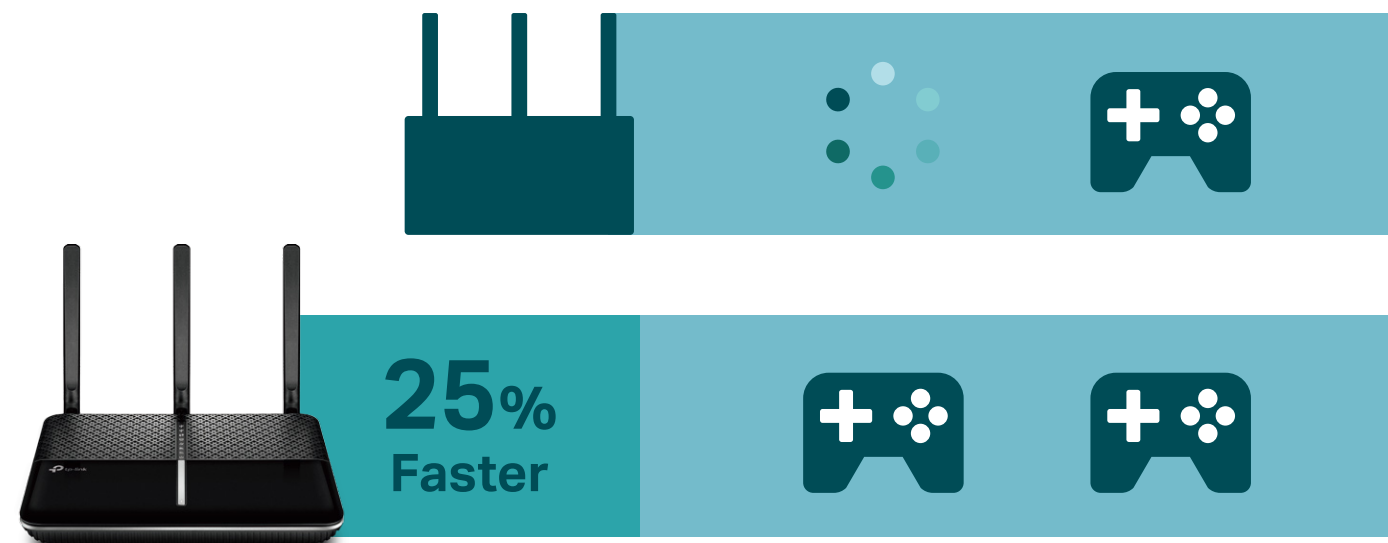
without Range Boost
Can not receive weak signals

with Range Boost
Greatly expands receive coverage

Highlights

NitroQAM™ Powered by Broadcom

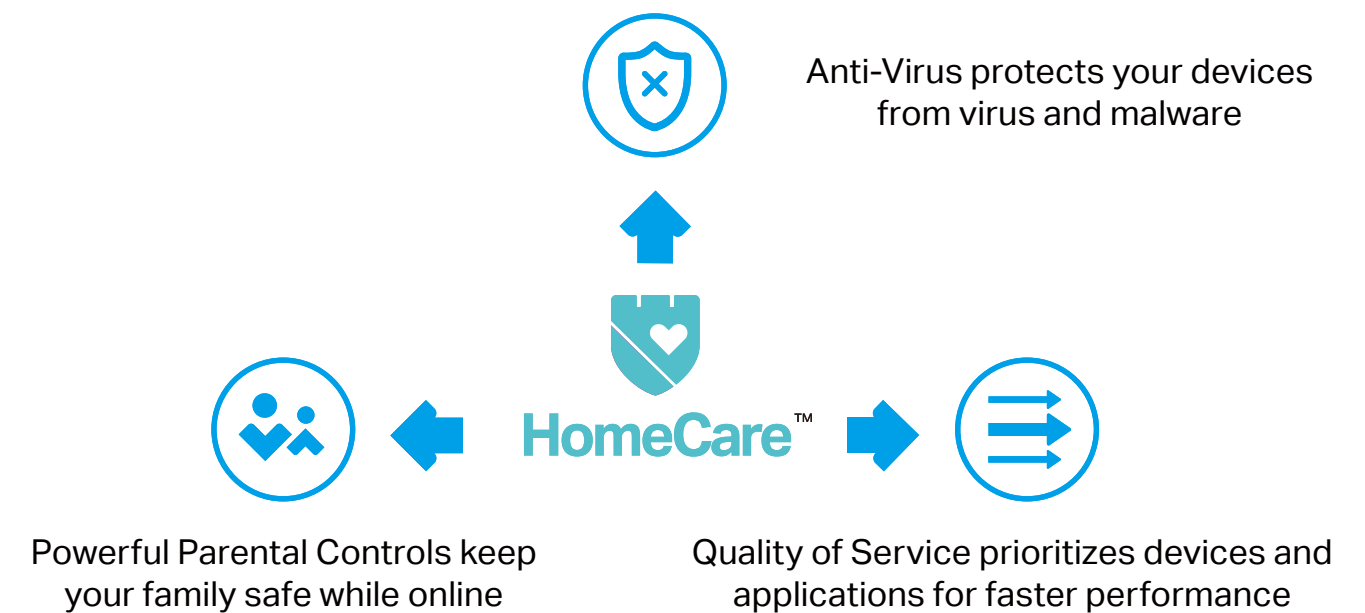
NitroQAM™ (1024QAM) boosts speeds on all Wi-Fi bands by 25% to significantly improve performance.



HomeCare™ for the Most Comprehensive Home Wi-Fi

Protect against the latest threats with powerful security, built-in antivirus and robust parental controls that update automatically. Enjoy faster performance with customizable quality of service.

With security powered by Trend Micro, every device connected is protected from more than 100,000 new security threats each day.

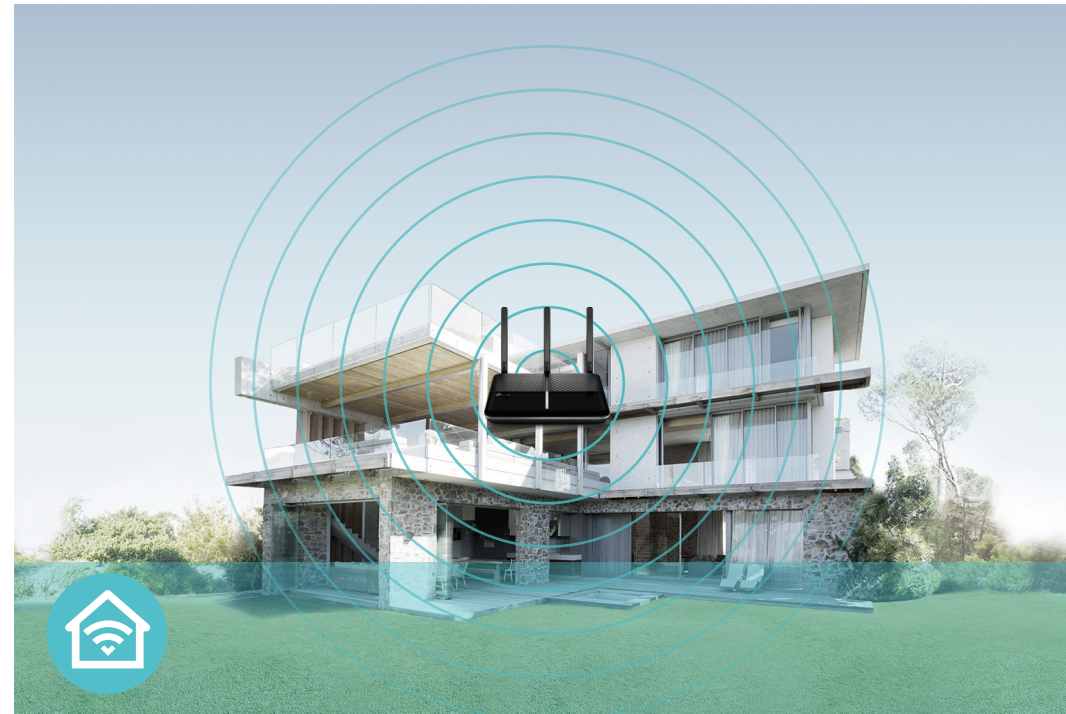


Features



Speed

- **Ultimate Wireless Speed** – Combined wireless speeds up to 600 Mbps (over 2.4GHz) and 1625 Mbps (over 5GHz)
- **NitroQAM™ Technology** – Use NitroQAM™ Technology modulation scheme for higher data throughput, boosting wireless speeds up to 25%
- **MU-MIMO Technology** – Simultaneously exchanges data with several devices, achieving speeds which are 3x faster than standard AC routers
- **Support 802.11 ac** – Provides a data transfer rate 3 times faster than 802.11n for each stream
- **Dual-core CPU** – 1.8GHz dual-core CPU and 2 co-processor make multi-tasking easy and boost data transfer rate



Wi-Fi Range

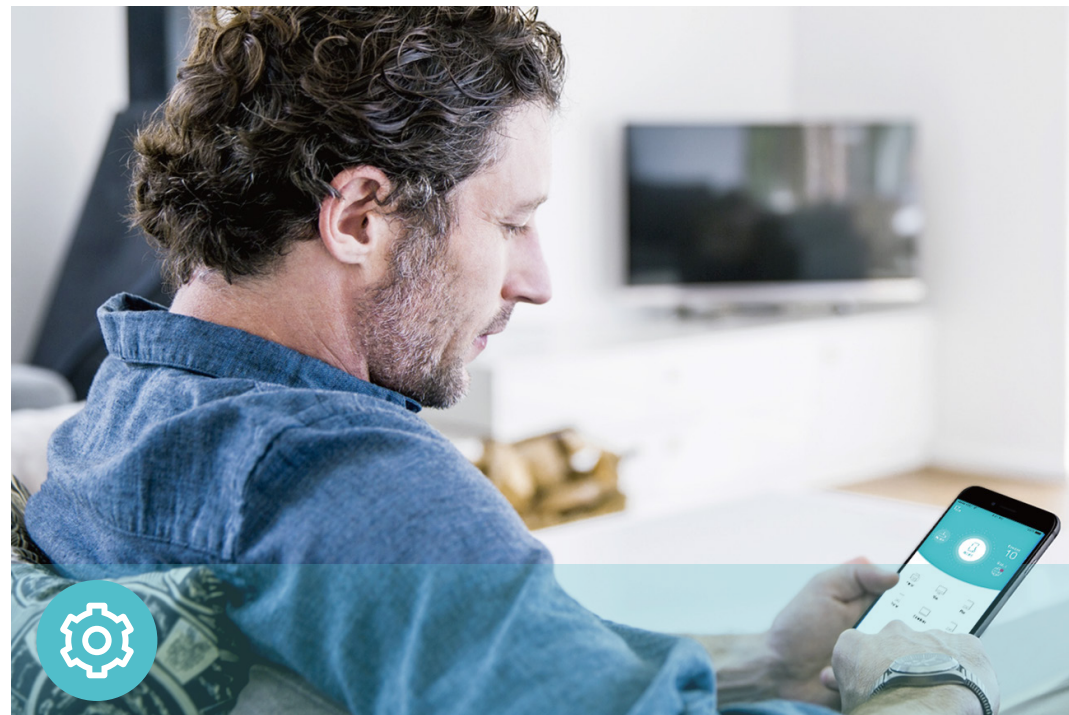
- **Ultimate Range Wi-Fi** – 3 dual band high-performance antennas with a high-powered amplifier ensure the widespread Wi-Fi coverage and a stable connection
- **Wi-Fi with Beamforming** – Beamforming technology locates the connected devices and further improves the Archer C2300's range and the signal strength to each mobile device, delivering a more reliable and efficient wireless connection



Reliability

- **Simultaneous Dual Band** – Separate Wi-Fi bands enable more devices to connect to your network without a drop in performance
- **Easy Bandwidth Management** – Advanced QoS makes it easier for you to manage the bandwidth of connected devices

Features



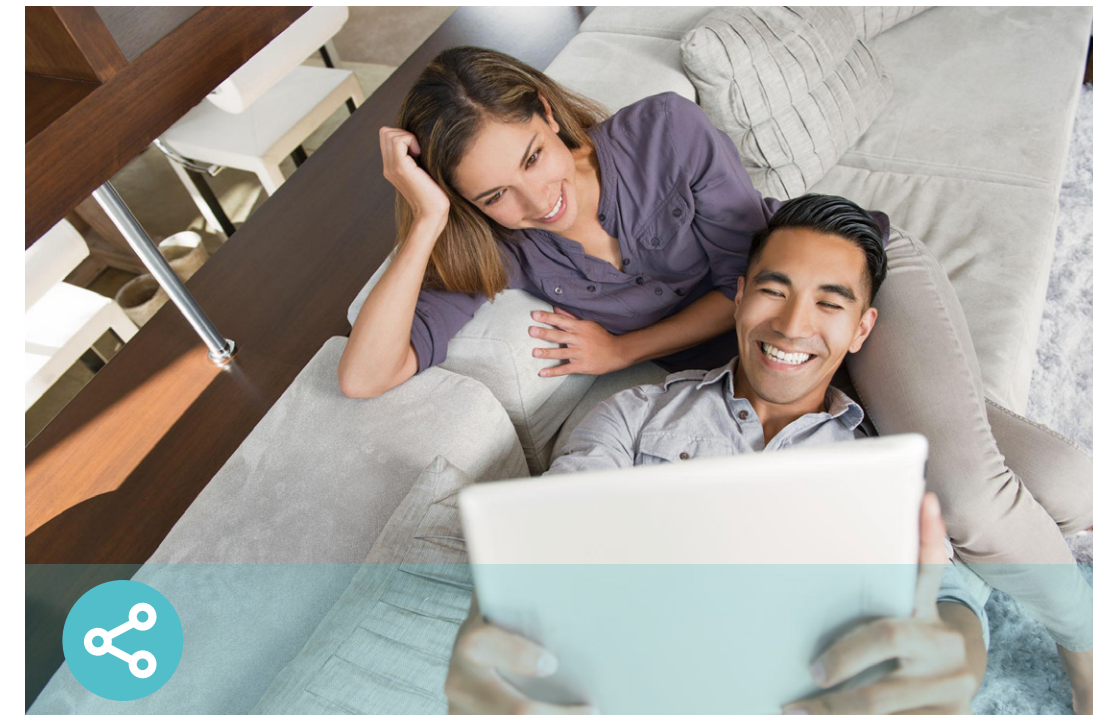
Ease of Use

- Intuitive Web UI – Ensures quick and simple Installation without hassle
- Fast Encryption – One-touch WPA wireless security encryption with the WPS button
- Wi-Fi On/Off – Turn on/off wireless radio as needed using the Wi-Fi On/Off button
- Power On/Off – Conveniently power on or off your router as required
- Hassle-free Management with Tether App – Network management is made easy with the TP-Link Tether App, available on any Android and iOS device
- Online Upgrade – Keeps informed of the latest firmware updates, ensuring your router stays at its best



Security

- Guest Network – Keep your main network secure by creating a separate network for friends and visitors
- Access Control – Establish a whitelist or blacklist to allow or restrict certain devices to access the internet
- Homecare – Provides a kit of dynamic - Parental Controls, QoS and Antivirus - to ensure safety, speed and security for everyone in your network
- VPN Server – PPTP VPN and OpenVPN are supported, making it easy to set up a secure connection between your private network and the internet
- Encryptions for Secure Network – WPA-PSK and WPA2-PSK encryptions provide active protection against security threats



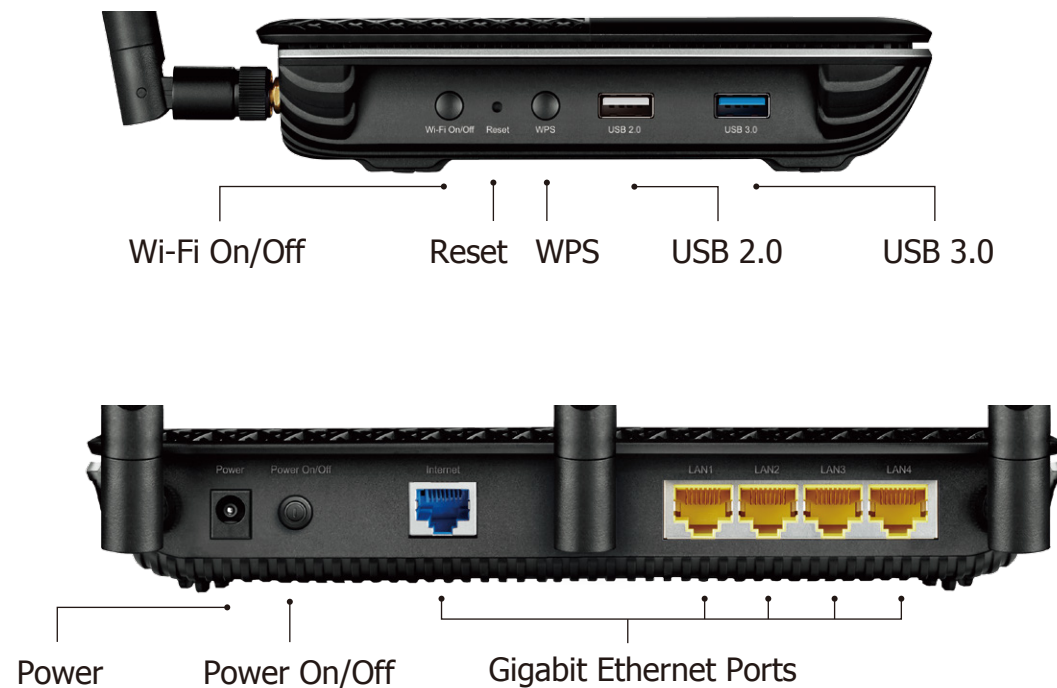
Easy Sharing

- Dual USB Ports for Fast Sharing – With one ultra-fast USB 3.0 port and one USB 2.0 port, you can access and share a printer as well as your files and media locally. Through the router's FTP server, you can also access your files and media from network devices remotely
- 10x Faster Transfer Speed – The USB 3.0 port provides up to 10x faster USB hard drive access than previous generation USB 2.0 connections
- Built-in Print Server – Allows wireless printing from multiple computers (works in conjunction with a USB printer)
- Built-in Media Server – Allows you to play music, watch videos and view photos from any device on your network

Specifications

Hardware

- Ethernet Ports: 4 10/100/1000Mbps LAN Ports, 1 10/100/1000Mbps WAN Port
- USB Ports: 1 USB 3.0 Port, 1 USB 2.0 Port
- Buttons: Wireless On/Off Button, Power On/Off Button, Reset Button, WPS Button
- Antennas: 3 Dual Band Antennas
- Dimensions (W x D x H): 215.8 X 163.8 X 38.5mm



Wireless

- Wireless Standards: IEEE 802.11ac/n/a 5GHz, IEEE 802.11b/g/n 2.4GHz
- Frequency: 2.4GHz and 5GHz
- Signal Rate: 1625Mbps at 5GHz, 600Mbps at 2.4GHz
- Transmit Power:
 - CE: <13.5dBm(2.4GHz), <16.5dBm(5GHz)
 - FCC: <25dBm(2.4GHz), <24dBm(5GHz)
- Reception Sensitivity:
 - 5GHz:
 - 11ac80M MCS11: -58dBm, 11ac80M MCS0: -88dBm
 - 11ac40M MCS11: -61dBm, 11ac40M MCS0: -91dBm
 - 11ac20M MCS11: -63dBm, 11ac20M MCS0: -95dBm
 - 54M: -76dBm, 6M: -95dBm
 - 2.4GHz:
 - 11n40M MCS9: -63dBm, 11n40M MCS0: -89dBm
 - 11n20M MCS8: -67dBm, 11n20M MCS0: -92dBm
 - 54M: -75dBm, 11M: -90dBm, 6M: -93dBm, 1M: -98dBm
- Wireless Function: Enable/Disable Wireless Radio, WDS Bridge, WMM, Wireless Statistics
- Wireless Security: Enable/Disable SSID Broadcast, 64/128-bit WEP, WPA/WPA2, WPA-PSK/WPA-PSK2 encryptions, QSS, Wireless MAC Filter

Specifications

Software

- Quality of Service: WMM, Bandwidth Control
- WAN Type: Dynamic IP, Static IP, PPPoE, PPTP(Dual Access), L2TP(Dual Access), Bigpond
- Management: Access Control, Local Management, Remote Management
- DHCP: Server, DHCP Client List, Address Reservation
- Port Forwarding: Virtual Server, Port Triggering, UPnP, DMZ
- Dynamic DNS: DynDns, NO-IP, TP-Link
- Access Control: Parental Control, Local Management Control, Blacklist, Whitelist
- Firewall Security: SPI Firewall, IP and MAC Address Binding
- Protocols: IPv4, IPv6
- USB Sharing: Supports Samba(Storage), FTP Server, Media Server, Printer Server
- Guest Network: 2.4GHz guest network x 1, 5GHz guest network x 1

Others

- Certification:
CE, FCC, RoHS
- System Requirements:
Microsoft Windows 98SE/NT/2000/XP/Vista™/7/8/8.1/10, MAC OS, NetWare, UNIX or Linux
Internet Explorer 11, Firefox 12.0, Chrome 20.0, Safari 4.0, or other Java-enabled browser
Cable or DSL Modem
Subscription with an internet service provider (for internet access)
- Environment:
Operating Temperature: 0°C~40°C (32°F ~104°F)
Storage Temperature: -40°C~70°C (-40°F ~158°F)
Operating Humidity: 10%~90% non-condensing
Storage Humidity: 5%~90% non-condensing
- Package Contents
AC2300 Wireless MU-MIMO Gigabit Router Archer C2300
Power Adapter
RJ45 Ethernet Cable
Quick Installation Guide



For more information, please visit

<http://www.tp-link.com/en/products/details/Archer-C2300.html>

or scan the QR code left

Attention: This device may only be used indoors in all EU member states and EFTA countries.

Specifications are subject to change without notice. TP-Link is a registered trademark of TP-Link Technologies Co., Ltd. Other brands and product names are trademarks or registered trademarks of their respective holders. Copyright ©2017 TP-Link Technologies Co., Ltd. All rights reserved.

*NitroQAM™ technology by Broadcom®

*Maximum wireless signal rates are the physical rates derived from IEEE Standard 802.11 specifications. Actual wireless data throughput and wireless coverage are not guaranteed and will vary as a result of 1) environmental factors, including building materials, physical objects, and obstacles, 2) network conditions, including local interference, volume and density of traffic, product location, network complexity, and network overhead, and 3) client limitations, including rated performance, location, connection, quality, and client condition.

*Use of MU-MIMO and 1024-QAM requires clients to also support those functions.

*A basic TP-Link HomeCare™, powered by Trend Micro™, package is included for 3 years from date of activation at no additional cost. It includes Parental controls, Quality of Service, and Antivirus. Deactivation of HomeCare™ will disable certain controls and protections. For a complete list of HomeCare™ functions, go to www.tp-link.com.

TP-Link Technologies Co., Ltd. No.5 Keyuan Road, Nanshan, Shenzhen, 518057, PRC