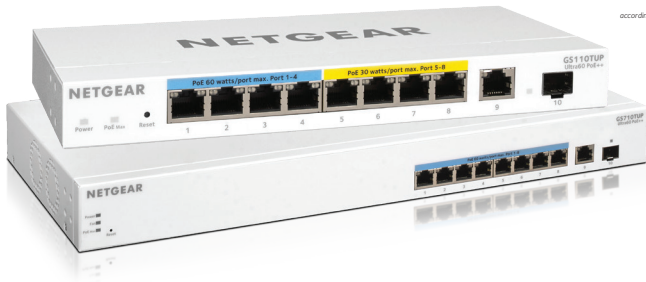


10-Port Gigabit Ethernet Ultra60 PoE++ Smart Managed Pro Switches



The first Cloud Manageable PoE++ switch with Uninterrupted Ultra60 60W PoE++ power

As the leader in PoE switching, NETGEAR now brings to market the first Cloud Manageable PoE++ switch with Uninterrupted Ultra60 60W PoE++ power to your business together with NETGEAR's innovation "Uninterrupted PoE" for constant power to the devices even during switch firmware updates or reboots.

With IoT (Internet of Things) continuously introducing wired devices for smart home and smart building automation systems, the 802.3bt PoE standard is needed to support those devices that require greater power - power that the 802.3at standard (30W per port) cannot support.

With the growing demand in modern business organizations for more Powered Devices (PD) and higher Power-over-Ethernet (PoE) consumption per PD, NETGEAR proudly introduces the new Ultra60 PoE++ Smart Managed Pro Switches with the 802.3bt standard to provide up to 60W per port output PoE.

In addition to the IoT devices, these new Ultra60 PoE++ switches will support 802.11AX wireless access points, PTZ and 4K IP surveillance cameras, PoE lighting, PoE-powered audio speakers and AV encoders, as well as other high-powered devices.

NETGEAR Ultra60 PoE++ Smart Managed Pro Switches offer advanced Layer 2+/Lite Layer 3 features such as static routing, advanced PoE functionality and controls including NETGEAR's innovative Uninterrupted PoE, and Remote/Cloud management capability with enhanced performance. These switches are the ideal solution even for the most advanced business organizations looking for the best combination of features, performance, and value. These switches are purposely designed for converged networks where voice, video, and data are all carried on a single network platform.

The GS110TUP comes with 4 Ultra60 PoE++ Gigabit ports, 4 PoE+ Gigabit ports, 1 dedicated non-PoE Gigabit copper and 1 dedicated Gigabit SFP port. With a 240W total PoE budget, the GS110TUP is sufficient for 802.3at PoE+ devices as well as future-proofing for 802.3bt PoE++ deployment. The fanless, silent design makes it perfect for an office environment or any other noise-sensitive deployments. With versatile mounting options, this small is flexible enough to be placed on a desk, mounted to the wall, ceiling or pole, or mounted in a rack.

The GS710TUP comes with 8 Ultra60 PoE++ Gigabit ports, 1 dedicated non-PoE Gigabit copper and 1 dedicated Gigabit SFP port, and includes a 480W PoE budget, offering full 802.3bt 60W PoE output across the 8 Ultra60 PoE++ ports. The GS710TUP is rack-mountable, and with an operating noise of less than 35dBA, the switch can also be placed outside of the data closet without disrupting those working nearby.

To fully empower PoE applications, NETGEAR Insight Remote/Cloud Management is now available on these two new switch models as an optional management mode. Activating the NETGEAR Insight Cloud management, enables management features allowing businesses simpler configuration and deployment from anywhere using the NETGEAR Insight app from mobile devices or the Insight Cloud Portal from any device with a web browser.

Highlights

More Powerful Switches for High Power Devices

- 4 x Ultra60 PoE++ Gigabit ports & 4 x PoE+ Gigabit ports with 240W PoE budget (GS110TUP)
- 8 x Ultra60 PoE++ Gigabit ports with 480W PoE budget (GS710TUP)
- 1 dedicated non-PoE Gigabit copper port
- 1 dedicated Gigabit SFP fiber port

Fast and flexible solution for business data, voice and video converged network

- Non-blocking switching with 20Gbps
- Fanless for silent operation in noise sensitive environments (GS110TUP)
- Flexible mounting options
 - GS110TUP: Desktop or wall mount (VESA standard mounting holes), or rack-mountable with included mounting kit
 - GS710TUP: Rack-mountable with included mounting kit
 - Ideal compact size for discreet installations on ceilings or walls to easily power LED lighting or IP Cameras.

Powerful Connectivity and Security

- Layer 3 static routing with 32 routes (IPv4) for inter-VLAN local routing
- Advanced VLAN support for better network segmentation

- L2/L3/L4 access control lists (ACLs) for granular network access control including 802.1x port authentication
- Uninterrupted PoE for constant power to your devices even during switch firmware updates or reboots
- Advanced per port PoE controls for remote power management of PoE connected devices including operation scheduling
- Advanced QoS (Quality of Service) for traffic prioritization including port-based, 802.1p and L2/L3/L4 DSCP-based
- Auto "denial-of-service" (DoS) prevention
- IGMP Snooping and querier for multicast optimization
- Ingress and egress rate limiting and priority queuing for better bandwidth allocation
- Port mirroring for network monitoring
- Energy Efficient Ethernet (IEEE 802.3az) for maximum power savings
- IPv6 management: IPv6 QoS, IPv6 ACL, IPv6 multicast, and static and dynamic IPv6 address assignment
- Cable test to troubleshoot connection issues
- Easy-to-use web browser-based management GUI available in English, German and Japanese
- SNMP v1, v2c, v3 and RMON remote monitoring

Fully-integrated cloud-manageable devices

Optional remote/cloud management, maintenance, and monitoring capability with NETGEAR Insight. Instantly activate NETGEAR Insight Cloud management from the local device management web GUI after creating your NETGEAR Insight account. NETGEAR Insight Basic service allows for your first two devices to be managed remotely for free.

Smart IT, not Big IT

- Easy to manage via web-based management interface
- NETGEAR Smart Control Center on a Windows PC for multi-switch deployment
- NETGEAR Switch Discovery Tool (NSDT) to discover, register and access to the local browser interface to configure the switches
- Network Management System (NMS300), allowing all NETGEAR business products to be deployed and managed through this single interface

NETGEAR quality and reliability

- Worry-free Limited Lifetime Warranty*, online technical chat support and Next Business Day (NBD) replacement



10-Port Gigabit Ethernet Ultra60 PoE++
Smart Managed Pro Switches

Hardware at a Glance

| | FRONT | REAR | | | | | SIDE |
|------------|-------------|--------------------------------------|-------------|------------------------|----------------|-----------------------------|---------|
| Model Name | Form-Factor | 10/100/1000BASE-T RJ-45 Copper Ports | 1G SFP | PoE++ Ports (60W/port) | PoE/PoE+ Ports | Power Supply (PoE Budget) | Fans |
| GS110TUP | Desktop | 9 | 1 Dedicated | 4 | 8 | External DC 54V 4.7A (240W) | Fanless |
| GS710TUP | Rack mount | 9 | 1 Dedicated | 8 | 8 | Internal (480W) | 2 |

Software at a Glance

| LAYER 2+ / LAYER 3 LITE FEATURES | | | | | | | | |
|---|--|-----------------------|-------------------|---|--|--|--------------------------|---|
| Management | PoE Control Features | IPv4/IPv6 ACL and QoS | Static Routing | IPv4/IPv6 Multicast Filtering | VLANs | IEEE (802.3az) Energy Efficient Ethernet | Convergence | Link Aggregation/ Port Trunking |
| Web Browser-based GUI (HTTP/HTTPS), PC-Based Smart Control Center Utility (SCC), RMON, SNMP, NETGEAR Insight Cloud Management via mobile App and Insight Portal | PoE on/off, Dynamic PoE budget allocation, PoE class override, PoE Power Usage Metering, PoE scheduling, Uninterrupted PoE | L2, L3, L4 Ingress | IPv4 32 Routes | IGMP Snooping, Querier, Fast Leave, L2 Multicast Router | Static, Dynamic, VoIP, Voice, Video, 8K Max MAC (64 VLANs), Protocol based, GARP, GVRP | Yes | LLDP-MED, RADIUS, 802.1X | LACP and Manual Static LAGs (up to 4 LAGs with max 8 members) |

Performance at a Glance

| Model Name | Packet Buffer | CPU | ACL | MAC Address Table ARP Table VLANs | Fabric | Latency (64-Byte Packet) | IPv4 Static Routing | Multicast IGMP Group |
|------------|---------------|---|----------------------|---|-------------------|--|---------------------|----------------------|
| GS110TUP | 512 KB | 500MHz single core 128MB RAM 32MB SPI FLASH | 100 shared (ingress) | 8K Max MAC 64 VLANs | 20 Gbps line-rate | 1G Copper: < 3.9 μs; 1G Fiber: < 3.9 μs | 32 | 256 |
| GS710TUP | | | | | | | | |

Features and Benefits

| Hardware Features | |
|---|--|
| Fully-integrated Cloud-manageable Devices | Require no additional hardware (cloud keys, network portals, local servers, VPN or proxy appliances etc) to directly connect to the cloud and allow remote management. No additional hardware or software. Just switch to Insight Cloud Management mode through Web browser-based User Interface and go. |
| 1000BASE-T Copper Ethernet and PoE+ and PoE++ connections | Supports 802.3bt type 3 (60W/port) devices, as well as all 802.3at (30W/port) and 802.3af (15.4W/port) devices. Good for high-density VoIP, surveillance and Wi-Fi AP deployments, scalable for future growth. Never face the risk of running out of PoE ports or PoE power budget. |
| 1000BASE-X SFP ports | One dedicated Gigabit SFP port provides a fiber uplink without sacrificing any downlink copper Gigabit Ethernet port, and across long distances. Support for Fiber and Copper modules. |
| Silent Acoustics (GS110TUP) | Fanless design allows for silent operation, great for deployment in noise-sensitive environments. |
| Energy Efficient Ethernet (IEEE 802.3az) | Maximum power reduction for ongoing operation cost savings. |
| Desktop, wall mount (VESA holes available), ceiling mount and rack mount (kit available) | Flexible deployment on desktop, wall, ceiling or other location using 100mm VESA-compliant mounts on GS110TUP. Both GS110TUP and GS710TUP support rack mount. Great for deployments of PoE-powered LED lighting or IP Cameras. |
| Kensington Lock Slot | Prevent theft, removal, or tampering when used for desktop deployment. |
| Software Features | |
| Remote setup, management, maintenance and monitoring anywhere, anytime, from your mobile device, PC, Mac, or tablet | Locally or remotely setup, configure, manage, monitor or even troubleshoot your network from anywhere, anytime. Check network status, view dashboards for network health and activity, power cycle PoE ports, etc, and update firmware remotely. No need to be on-site, open up ports to your network, or VPN into it. |
| Auto-join and Configure (Zero-Touch Provisioning) | Additional Insight Managed devices added to the network automatically inherit settings and configuration. |
| Multi-site, Multi-network Single Pane-of-Glass View | View and configure multiple networks across multiple sites, all from one single app; NETGEAR Insight. |
| Comprehensive IPv6 Support for Management, ACLs and QoS | Build current network with future in mind. Ensure investment protection and a smooth migration to an IPv6-based network without switch replacement. |
| IPv4 Static Routing | A simple way to provide segmentation of the network with internal routing through the switch - reserving the router for external traffic routing only, making the entire network more efficient. |
| Robust security features: <ul style="list-style-type: none"> • 802.1x authentication (EAP) • Port-based security by locked MAC • ACL filtering to permit or deny traffic based on MAC and IP addresses | Build a secured, converged network with all types of traffic by preventing external attacks and blocking malware while allowing secure access for authorized users. |
| Comprehensive QoS features: <ul style="list-style-type: none"> • Port-based or VLAN 802.1p-based prioritization • Layer 3-based (DSCP) prioritization • Port-based egress rate limiting | Advanced controls for optimized network performance and better delivery of mission-critical traffic such as voice and video. |
| Uninterrupted PoE | Keep PoE power on even when the switch is updating firmware or performing a software reboot. Ideal when powering IP Cameras and lights for continuous feed and power. |

10-Port Gigabit Ethernet Ultra60 PoE++ Smart Managed Pro Switches

| Software Features (continued) | |
|---|---|
| Auto-VoIP, Auto-Voice VLAN, and Auto-Video VLAN | Automatic Voice over IP prioritization (Auto-VoIP) simplifies most complex multi-vendor IP telephone deployments either based on protocols (SIP, H.323 and SCCP) or on OUI bytes (default database and user-based OUIs) in the phone source MAC address, providing the best class of service to VoIP streams (both data and signaling) over other ordinary traffic by classifying traffic, and enabling correct egress queue configuration. Similarly, Auto-Video VLAN enables IGMP snooping to minimize broadcast streams. |
| IGMP Snooping and MLD Snooping | Facilitate fast receiver joins and leaves for multicast streams. Save cost and improve network efficiency by ensuring multicast traffic only reaches designated receivers without the need of an extra multicast router. |
| Protected Ports | Ensure no exchange of unicast, broadcast, or multicast traffic between the protected ports on the switch, thereby improving the security of your converged network. This allows your sensitive phone conversations to stay private and your surveillance video clips can be forwarded to their designated storage device without leakage or alteration. |
| DHCP Snooping | Ensure IP address allocation integrity by only allowing DHCP messages from trusted DHCP servers and dropping malformed DHCP messages with a port or MAC address mismatch. |
| Dynamic VLAN Assignment (RADIUS) | IP phones and PCs can authenticate on the same port but under different VLAN assignment policies. Users are free to move around and enjoy the same level of network access regardless of their physical location on the network. |
| Port Trunking/Link Aggregation (LACP) | Build up bigger bandwidth to support aggregated uplink/downlink traffic or to provide redundant link(s). Aggregate up to 8 ports for 8Gbps connections. |
| Loop Prevention and Auto-DoS Prevention | Detect and prevent (auto port shutdown) accidental network loops and protect against DoS attacks. |
| PoE Timer and Scheduling | Allows IT administrators to increase network security, better utilize network resources and conserve energy by scheduling or remotely controlling on/off of PoE ports. |
| Port Mirroring and Cable Test | Many-to-one port mirroring for better and quicker network diagnostics and troubleshooting. Cable test easily identifies bad Ethernet cables. |
| Dual Firmware Images | Dual firmware images for transparent firmware updates with minimum service interruption |
| Firmware Updates from Cloud | Direct cloud-to-device firmware updates, initiated and/or scheduled using the Insight app, all from the palm of your hand, anytime, anywhere when using NETGEAR Insight management. |
| Multiple Language Local GUI | Product documentation and local-only web user interfaces are translated, giving you the ability to select your preferred language [‡] . |

[‡] English, German, and Japanese are the current supported languages in the local-only web GUI. The Insight mobile app and Insight Cloud Portal support local languages per the device used (phone or computer browser).

Simply Activate NETGEAR Insight Cloud Management to manage your network. Anytime. Anywhere.

By activating the NETGEAR Insight Cloud management, the users will enable fundamental management features allowing businesses simpler configuration and deployment from anywhere using the NETGEAR Insight app from mobile devices or the Insight Cloud Portal from any device with a web browser.

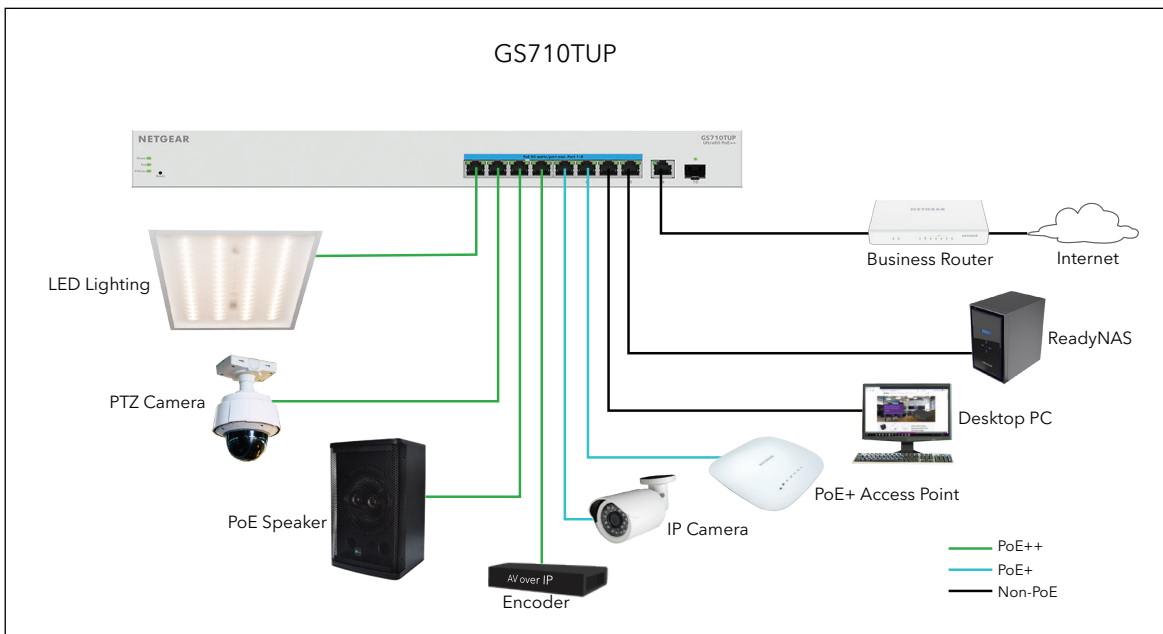
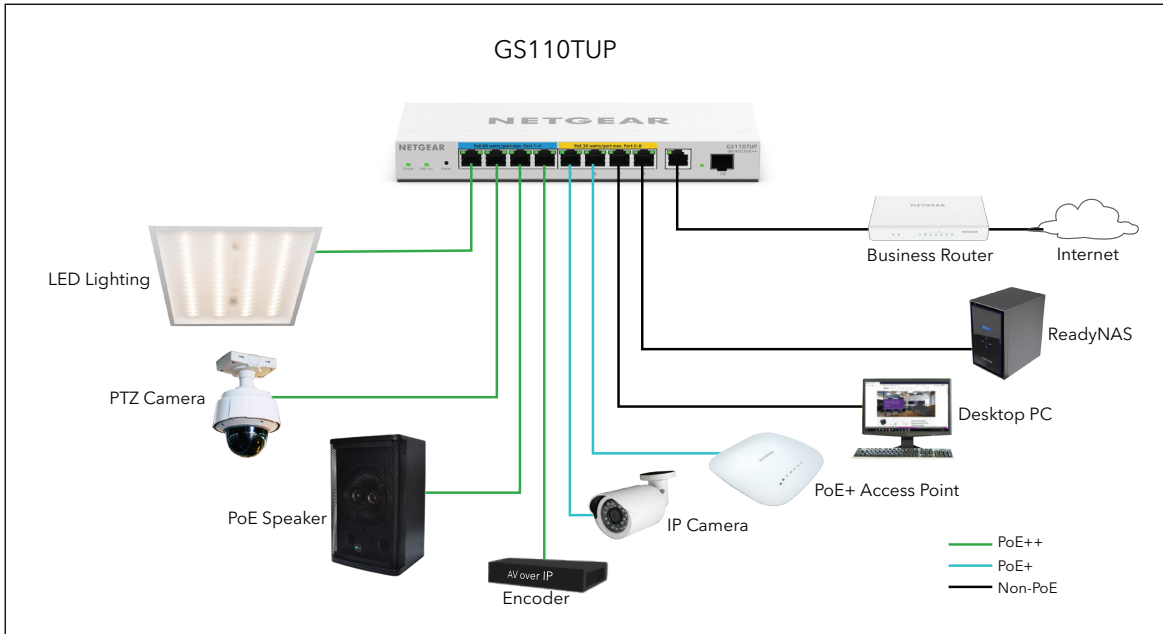
Unique advanced management features of these Insight Managed devices include:

- Remote monitoring and management with performance dashboards and troubleshooting features including remote reboot, port and PoE advanced configuration including remote enable/disable/power-cycle, PoE scheduling, and firmware updates with auto-schedule mode
- Single pane-of-glass multi-device, multi-network, and multi-site remote monitoring and notifications with the NETGEAR Insight app
- Full-fledged local or remote access for configuration, management, and monitoring on a larger display using your tablet, laptop, or desktop computer through the NETGEAR Insight Cloud Portal
- Configurable in-app and email alerts and notifications
- Auto-join and configure (zero-touch provisioning) for additional Insight Managed devices added to the network
- Centralized network configuration (policies) across Insight Managed Switches, Access Points, and ReadyNAS storage for VLANs, ACLs, QoS, LAGs, etc.
- Cloud-based network administration, monitoring, and firmware management

For more information about NETGEAR Insight-manageable device settings, please see at:
<https://www.netgear.com/support/product/Insight.aspx>

Application Sample

Power The Devices in Your Business



* GS110TUP and GS710TUP can support, but are not limited to, power the devices shown in the above examples.

Technical Specifications

| Technical Specifications | GS110TUP | GS710TUP |
|---|--|---|
| Gigabit Ethernet RJ-45 Copper ports (10M/100M/1G) - 1000BASE-T | 9 | 9 |
| PoE/PoE+ ports | 8 | 8 |
| PoE++ ports (802.3 bt Type3 60w/port) | 4 | 8 |
| Gigabit SFP (fiber) ports (100M/1G) - 1000BASE-X | 1 (dedicated) | 1 (dedicated) |
| Power Supply | External DC 54V 4.7A | Internal Power Supply |
| Kensington Lock | Yes (rear) | |
| LEDS | | |
| Front (per device) | Power (with Cloud Mode Indicator), PoE Max | Power (with Cloud Mode Indicator), PoE Max, Fan |
| Front (port side) (per port) | Speed/Link/Activity (left), PoE Power (right) | Speed/Link/Activity (left), PoE Power (right) |
| Unified Network Management (Discovery, Setup, Monitoring, and Management) through NETGEAR Insight Cloud Management | | |
| Discovery, setup, monitoring and management | NETGEAR Insight mobile app on phone or tablet; Insight Cloud Portal from PC, Mac, or tablet web browser | |
| Remote/Cloud management | Anywhere, anytime, from the palm of your hand using Insight mobile app or from any PC, Mac, or tablet web browser using the Insight Cloud Portal | |
| Centralized network configuration (policies) | Centralized network configuration (policies) across Insight Managed Switches, Wireless Access Points, and Business-class ReadyNAS Storage for VLANs, ACLs, QoS, and LAGs | |
| Device auto-join and configure (zero-touch provisioning) | Additional Insight Managed devices added to the network automatically inherit the network configuration | |
| Multi-site, multi-network single pane-of-glass view | Manage multiple sites, locations, and networks in a single view using the Insight mobile app or Insight Cloud Portal | |
| Multi-switch, multi-port concurrent configuration for ACLs, VLANs, QoS, PoE, etc | Apply settings and policies on multiple ports across multiple switches all at the same time using the Port Config Wizard | |
| Performance Specifications | | |
| CPU | 500MHz single core 128MB RAM 32MB SPI FLASH | |
| Packet buffer memory (Dynamically shared across only used ports) | 512 KB | |
| Forwarding modes | Store-and-forward | |
| Bandwidth (non-blocking, full duplex) | 20Gbps | |
| Priority queues | 8 | |
| Priority queuing | Weighted Round Robin (WRR) and Strict Priority | |
| MAC Address database size (48-bit MAC addresses) | 8K | |
| Multicast groups | 256 | |
| Number of IPv4 static routes | 32 | |
| Number of VLANs | 64 | |

10-Port Gigabit Ethernet Ultra60 PoE++
Smart Managed Pro Switches

| Performance Specifications | GS110TUP | GS710TUP |
|---|---|---|
| Number of DHCP snooping bindings | | 256 |
| Access Control Lists (ACLs) | 100 shared for MAC, IP and IPv6 ACLs | |
| Packet forwarding rate (64 byte packet size) (Mfps or Mpps) | | 14.8 |
| 1G Copper standard latency (µsec) (64-byte; 1518-byte; 9216-byte frames) | 64-byte: 3.855 µsec 1518-byte: 4.054 µsec 9216-byte: 3.791 µsec | 64-byte: 3.859 µsec 1518-byte: 4.063 µsec 9216-byte: 3.789 µsec |
| 1G Copper Uplink latency (µsec) (64-byte; 1518-byte; 9216-byte frames) | 64-byte: 3.887 µsec 1518-byte: 4.087 µsec 9216-byte: 3.820 µsec | 64-byte: 3.887 µsec 1518-byte: 4.087 µsec 9216-byte: 3.820 µsec |
| 1G SFP Fiber latency (µsec) (64-byte; 1518-byte; 9216-byte frames) | 64-byte: 3.887 µsec 1518-byte: 4.087 µsec 9216-byte: 3.820 µsec | 64-byte: 3.887 µsec 1518-byte: 4.087 µsec 9216-byte: 3.820 µsec |
| Jumbo frame support | Up to 10K packet size | |
| Acoustic noise level @ 25° C (dBA) (ANSI-S10.12) | 0 dBA (fanless) | 35dBA |
| Mean Time Between Failures (MTBF) @ 25° C | 695,508 hrs (79 yrs) | 643,873 hrs (73 yrs) |
| POE Configuration | | |
| Number of PoE (802.3af)/PoE+ (802.3at) ports | 8 PoE+ | 8 PoE+ |
| Number of PoE++ (802.3bt) ports (Type3 60W/port) | 4 PoE++ | 8 PoE++ |
| Total PoE power budget (watts) | 240W | 480W |
| Advanced per-port PoE controls (enable/disable/power limit) | Yes | |
| Advanced per-port PoE scheduling/timers | Yes | |
| Uninterrupted PoE | Yes | |
| L2 Services - VLANS | | |
| IEEE 802.1Q VLAN Tagging | Yes | |
| Protocol-based VLANs | Yes | |
| MAC-based VLANs | Yes | |
| L2 Services - Availability | | |
| Broadcast, multicast, unknown unicast storm control | Yes | |
| IEEE 802.3ad - LAGs (LACP) | Yes | |
| IEEE 802.3x (full duplex and flow control) | Yes | |
| IEEE 802.1D Spanning Tree Protocol | Yes | |
| IEEE 802.1w Rapid Spanning Tree Protocol | Yes | |
| IEEE 802.1s Multiple Spanning Tree Protocol | Yes | |
| L2 Services - Multicast Filtering | | |
| IGMP snooping (v1, v2 and v3) | Yes | |
| MLD snooping support (v1 and v2) | Yes | |
| IGMP snooping queries | Yes | |

10-Port Gigabit Ethernet Ultra60 PoE++ Smart Managed Pro Switches

| L2 Services - Multicast Filtering | GS110TUP | GS710TUP |
|--|----------|--|
| Block unknown multicast | | Yes |
| Multicast groups | | 256 |
| L3 Services - DHCP | | |
| DHCP client | | Yes |
| DHCP snooping | | Yes |
| Number of DHCP snooping bindings | | 256 |
| L3 Services - Routing | | |
| IPv4 static routes | | 32 |
| VLAN routing | | Yes |
| Host ARP table / NDP cache (number of entries) | | 512 ARP / NDP |
| ICMP Router Discovery Protocol (IRDP) | | Yes |
| Link Aggregation | | |
| IEEE 802.3ad - LAGs (LACP) | | Yes |
| Manual Static LAG | | Yes |
| # of Static or LACP LAGs # of members in each LAG | | 4 LAGs with max 8 members in each LAG |
| Network Monitoring and Discovery Services | | |
| 802.1ab LLDP | | Yes |
| LLDP-MED | | Yes |
| SNMP | | Yes |
| RMON group 1,2,3,9 | | Yes |
| Network Security | | |
| IEEE 802.1x | | Yes |
| Guest VLAN | | Yes |
| RADIUS-based VLAN assignment via .1x | | Yes |
| MAC-based .1x | | Yes |
| RADIUS accounting | | Yes |
| Access Control Lists (ACLs) | | L2 / L3 / L4 |
| IP-based ACLs (IPv4 and IPv6) | | Yes |
| MAC-based ACLs | | Yes |
| TCP/UDP-based ACLs | | Yes |
| MAC lockdown | | Yes |
| MAC lockdown by the number of MACs | | Yes |
| Control MAC # Dynamic learned entries (per port) | | 4096 |
| Control MAC # static entries (per port) | | 48 |
| IEEE 802.1x RADIUS port access authentication/type | | Yes |
| Port-based security by locked MAC addresses | | Yes |

10-Port Gigabit Ethernet Ultra60 PoE++ Smart Managed Pro Switches

| Network Security | GS110TUP | GS710TUP |
|---|--|-------------------------|
| Broadcast, multicast, unknown unicast storm control | | Yes |
| DoS attacks prevention | | Yes |
| Protected ports | | Yes |
| Quality of Service | | |
| Port-based rate limiting | | Yes, ingress and egress |
| Port-based QoS | | Yes |
| Support for IPv6 fields | | Yes |
| DiffServ QoS | | Yes, ingress |
| IEEE 802.1p COS | | Yes |
| Destination MAC and IP | | Yes |
| IPv4 and v6 DSCP | | Yes |
| IPv4 and IPv6 ToS | | No |
| TCP/UDP-based | | Yes |
| Weighted Round Robin (WRR) | | Yes |
| Strict priority queue technology | | Yes |
| Auto-VoIP VLAN / Auto-Voice VLAN | Yes, based on OUI bytes (default database and user-based OUIs) in the phone source MAC address | |
| Auto-VoIP | Yes, based on protocols (SIP, H.323 and SCCP). Prioritizes traffic to a higher queue. | |
| Voice VLAN | Yes, based on either VLAN ID or 802.1p priority, packets are passed onto the connecting VoIP phone using LLDP-MED. | |
| Auto-Video VLAN | | Yes |
| Other Features | | |
| Advanced per-port PoE controls (enable/disable/power limit) | | Yes |
| Advanced per-port PoE scheduling | | Yes |
| Loop detection & prevention | | Yes (both) |
| DNS Client | | Yes |
| Option to enable/disable BPDU flooding when STP is disabled | | Yes |
| Option to enable/disable the flooding of EAPOL when 802.1x is disabled | | Yes |
| Management, Monitoring & Troubleshooting | | |
| Cloud/Remote management | | Yes |
| Insight mobile app & Insight Cloud Portal management | | Yes |
| uPnP Discovery | | Yes |
| Bonjour Discovery | | Yes |
| Networking monitoring | | Yes |
| Data/performance logs | | Yes |
| Centralized network configuration/policies (network-centric management) | | Yes |

10-Port Gigabit Ethernet Ultra60 PoE++ Smart Managed Pro Switches

| Management, Monitoring & Troubleshooting | GS110TUP | GS710TUP |
|--|--|--|
| Device auto-join and configure (zero-touch provisioning) | | Yes |
| Multi-site, multi-network single pane-of-glass view | | Yes |
| Multi-switch, multi-port concurrent configuration | | Yes |
| Network/global password (for all Insight Managed devices on a network) | Yes (per network/subnet via NETGEAR Insight mobile app and Insight Cloud Portal) | |
| Password management | | Yes |
| IP Access List | | Yes |
| Configurable management VLAN | | Yes |
| Admin access control via RADIUS and TACACS+ | | Yes |
| IPv6 management | | Yes |
| SNTP client over UDP port 123 | | Yes |
| Firmware upgrade direct from Cloud (via mobile device or Insight Cloud Portal) | Yes* (when using NETGEAR Insight management mode) | |
| SNMP v1/v2c | | Yes |
| SNMP v3 with multiple IP addresses | | Yes |
| RMON group 1,2,3,9 | | Yes |
| Smart Control Center (SCC) for multi-switch management | | Yes |
| Port mirroring | | Yes |
| Many-to-one port mirroring | | Yes |
| Cable test utility | | Yes |
| Ping and tracerout client | | Yes |
| Local-only web browser-based management GUI with multiple language support* | | Yes |
| TLS Web-based access (version) | | Yes (v1.2) |
| HTTP/TFTP firmware update | | Yes |
| Dual software (firmware) image | | Yes |
| Memory and flash log | | Yes |
| Syslog (Server) | | Yes |
| Power Consumption | | |
| Max power (worst case, all ports used, line-rate traffic) (Watts) | 11.1 W | 22.9 W |
| Max power (worst case, all ports used, full PoE, line-rate traffic) (Watts) | 276.8 W | 554.0 W |
| Min power (link-down standby) (Watts) | 7.4 W | 21.2 W |
| Heat Dissipation (min w/o PoE and max with full PoE) (BTU/hr) | Max: 945.00 BTU/hr Min: 25.26 BTU/hr | Max: 1891.36 BTU/hr Min: 72.38 BTU/hr |
| Energy Efficient Ethernet (EEE) IEEE 802.3az | Yes (deactivated by default) | |
| Auto power down | Yes (deactivated by default) | |
| Fan(s) (temperature- and load-based speed control) | Fanless | 2 |

10-Port Gigabit Ethernet Ultra60 PoE++ Smart Managed Pro Switches

| Physical Specifications | GS110TUP | GS710TUP |
|---|--|--|
| Dimensions (W x D x H) | 236 x 101 x 27 mm (9.3 x 4.0 x 1.1 in) | 440 x 204 x 43 mm (17.3 x 8.0 x 1.7 in) |
| Weight | 0.63kg (1.39lb) | 2.99kg (6.59lb) |
| Mounting options | Desktop, wall mount with VESA-standard (100mm), rack mount | Rack mount |
| Environmental Specifications | | |
| Operating | | |
| Operating Temperature | 0° to 40°C (32° to 104°F) | 0° to 50°C (32° to 122°F) |
| Humidity | 95% maximum relative humidity (RH), non-condensing | |
| Altitude | 10,000 ft (3,000 m) maximum | |
| Storage | | |
| Storage Temperature | -20° to 70°C (- 4° to 158°F) | |
| Humidity (relative) | 95% maximum relative humidity (RH), non-condensing | |
| Altitude | 10,000 ft (3,000 m) maximum | |
| Warranty and Support | | |
| Hardware Limited* Warranty (Switch) | Limited Lifetime* (switch only) | Limited Lifetime* (switch and power supply) |
| External Power Adapter Limited Warranty (GS110TUP Only) | 2 years (external power adapter) | N/A |
| Next-Business-Day (NBD) Replacement | Limited Lifetime* | |
| Technical support via phone | 90 days free from date of purchase* | |
| 24x7 Online Chat Technical support | Limited Lifetime* | |
| ProSUPPORT OnCall 24x7 Service Packs** | Category 1 PMB0311-10000S PMB0331-10000S PMB0351-10000S | |
| Package Content | | |
| Smart Managed Pro Switch | ✓ | ✓ |
| Power Adapter | ✓ | N/A |
| Power Cord (localized to region of sale) | ✓ | ✓ |
| Mounting Kit | Wall mount and rack mount | Rack mount |
| Quick Installation Guide | ✓ | ✓ |

‡ English, German, and Japanese are the current supported languages in the local-only web GUI. The Insight mobile app and Insight Cloud Portal support local languages per the device used (phone or computer browser).

Ordering Information

| Ordering Information | |
|---|---|
| GS110TUP-100NAS | North America, Latin America |
| GS110TUP-100EUS | Europe |
| GS110TUP-100AJS | Japan |
| GS110TUP-100PRS | China |
| GS710TUP-100NAS | North America, Latin America |
| GS710TUP-100EUS | Europe |
| GS710TUP-100AJS | Asia Pacific |
| GS710TUP-100PRS | China |
| Optional Modules, Software Licenses and Accessories | |
| AGM731F | SFP Transceiver 1000BASE-SX (Short range, multimode) |
| AGM732F | SFP Transceiver 1000BASE-LX (Long range, single mode) |
| AGM734-10000S | SFP Transceiver 1000BASE-T Copper RJ45 GBIC |

*This product comes with a limited warranty that is valid only if purchased from a NETGEAR authorized reseller, and covers unmodified hardware, fans and internal power supplies - not software or external power supplies, and requires product registration at <https://www.netgear.com/business/registration> within 90 days of purchase; see <https://www.netgear.com/about/warranty> for details. Intended for indoor use only.

**The NETGEAR OnCall 24x7 contract provides unlimited phone, chat and email technical support for your networking product.

† NETGEAR #1 in US Market Share according to NPD data for Unmanaged and Smart Switches, September 2019. NETGEAR #1 in Europe Market Share according to Context data for Unmanaged and Smart Switches, September 2019.

NETGEAR, the NETGEAR Logo, and NETGEAR Insight are trademarks of NETGEAR, Inc. in the United States and/or other countries. Other brand names mentioned herein are for identification purposes only and may be trademarks of their respective holder(s). Information is subject to change without notice. ©NETGEAR, Inc. All Rights reserved.
NETGEAR, Inc. 350 E. Plumeria Drive, San Jose, CA 95134-1911 USA, 1-888-NETGEAR (638-4327), E-mail: info@NETGEAR.com, www.NETGEAR.com